

WALTHER



**LG500**

TARGETED PERFECTION

**NEW SERIES**

First-class features. Unprecedented precision.

# LG500

TARGETED PERFECTION



## LG500 itec BTE

The flagship model of the LG500 family.  
From World Cup to Olympics.

- WALTHER BIOMETRIC TRIGGER ELECTRONIC
- WALTHER VISIONIC MATCHDIOPTER
- WALTHER ITEC SYSTEM BEDDING
- STABILITY & RESPONSE SYSTEM



Model BTe Item No. 2866170E  
Model M Item No. 2866170M



**STABILITY & RESPONSE SYSTEM** The Walther SRS system includes an adaptive inline impulse equalizer, a vibration-minimized loading mechanism and a new, pneumatically driven absorber. These components provide the shooter with the fine feedback necessary for achieving the best possible accuracy and unbeatable constancy.



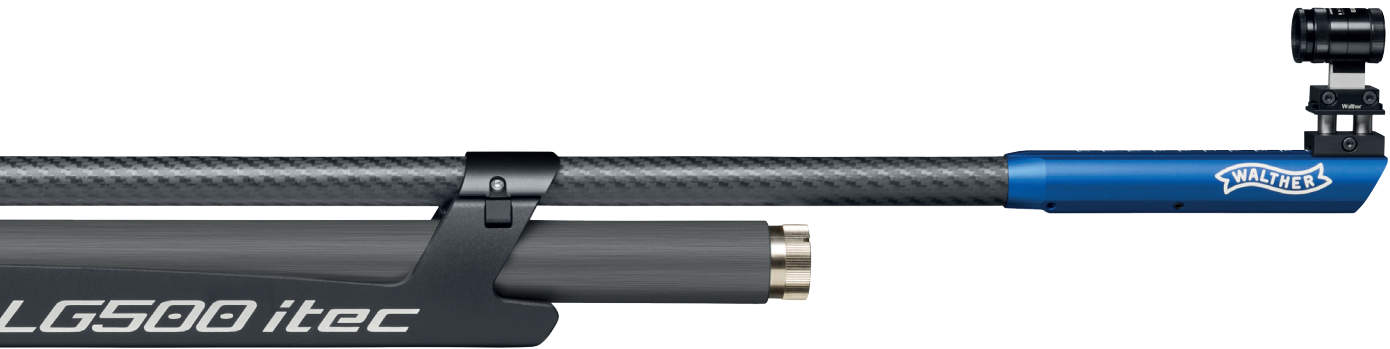
**ACCURACY CONTROL SYSTEM** The Accuracy Control System (ACS) is rooted inside the LG500 itec platform. The interface between the barrel and receiver is perfected, the barrel geometry optimized for controlled vibration, and further improvements are made to the receiver geometry.



**WALTHER BALANCING SYSTEM** 90 g balancing elements permit custom optimization of overall weight, balance and weight distribution in the fore-end and buttstock. In the fore-end these elements are also infinitely adjustable. The two-part buttstock enables independent adjustment of the butt length and cheek position without allowing either setting to affect the other.



**ITEC SYSTEM BEDDING** The itec bedding ensures that the barreled action is stable and free of tension in the stock. It features enlarged bearing areas plus innovative fine adjustments for elevation and windage.



**NEW**  
NEW

## LG500 Expert

Contend with the best. Performance for high-performance athletes.



AVAILABLE  
ON STOCK

- WALTHER VISIONIC MATCH DIOPTER
- WBS WALTHER BALANCING SYSTEM
- ACS ACCURACY CONTROL SYSTEM
- SYSTEM WITH ABSORBER

Item No. 2883619M



## LG500 Competition

LG500 innovation for ambitious sport shooters.



AVAILABLE  
FROM MAY 2025

- INSIGHT-OUT MATCH DIOPTER
- SIGHT RAISER BLOCKS
- ADJUSTABLE CHEEKPIECE
- SYSTEM WITH ABSORBER

Item No. 2889356M



**NEW**  
NEW



# LG500 Blacktec

Performance for clubs. First-class features at a top price-performance ratio.



NEW  
NEW

- BASIC MATCHDIOPTER
- FORESIGHT HOLDER BASIC Ø22 MM
- CLASSIC STOCK BEDDING
- ADJUSTABLE CHEEKPIECE



Item No. 2893673M



## BASIC CONFIGURATION LG500 MODELS

	itec BTe	itec M	Expert M	Competition M	Blacktec M
SRS Stability & Response System (pneumatically driven absorber)	X	X	X	X	-
WBS Walther Balancing System (variable adjustment of overall weight, balance and weight distribution)	X	X	X	X	X
ACS Accuracy Control System	X	X	X	X	X
ITEC System Bedding	X	X	X	-	-
Aluminum stock with a wide range of settings	X	X	X	X	X
Finely adjustable mechanical trigger	-	X	X	X	X
BTe trigger unit, extremely fine-tunable electronic trigger	X	-	-	-	-
Compressed air system for 300 and 200 bar	X	X	X	X	X
Steel cylinder (approx. 600 shots) with manometer	X	X	X	X	X
Modular system for custom configuration and modification	X	X	X	X	X
ECO valve technology (minimal recoil, shorter locktime, lower air consumption) and adaptive impulse equalizer	X	X	X	X	X
Two balancing elements included	X	X	X	-	-
Infinitely adjustable stock cast	X	X	X	-	-
Pressure reducer with maintenance-free QUICKCLEAN air filter	X	X	X	X	X
Ergonomically shaped loading lever (left-hand or right-hand positioning)	X	X	X	X	X
Carbon-fiber barrel jacket	X	X	X	X	X
Wide breech (easy loading, precise pellet guidance) with loading status indicator	X	X	X	X	X
Dry-practice mode	X	X	X	X	X
Walther VISIONIC match diopter	X	X	X	-	-
Walther Insight-Out match diopter	-	-	-	X	-
Walther Basic match diopter	-	-	-	-	X

## TECHNICAL DATA

Compressed air system	300 + 200 bar
Caliber	4,5 mm (.177)
Minimum distance trigger blade to butt plate	300 mm
Minimum length	1,060 mm
Minimum height	290 mm
Width (without loading lever)	50 mm
Weight (incl. 2x 90-g-stock weights and compr.air cyl.)	4,500 g
Trigger pull weight, mechanical trigger	50 – 120 g
Sight radius	650 – 850 mm
Barrel length	420 mm
Cylinder capacity	approx. 500 shots



CARL WALTHER GMBH  
Im Lehrer Feld 1  
D-89081 Ulm GERMANY  
Phone +49-731-1539-0  
info@carl-walther.de  
www.carl-walther.com